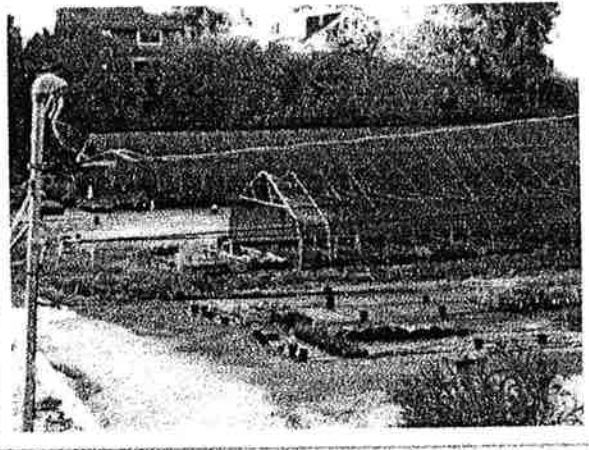


Atlantic City Nursery Urban Agriculture Project, Fall 2009

Goal: Repurpose the greenhouses and growing space at Atlantic City Nursery in Southeast for urban agriculture and create a local distribution system so that the food produced provides fresh, nutritious food for residents of the Rainier Valley community.

Background: The Atlantic City Nursery is situated south of Pritchard Island Beach and north of Beer Sheva Park in the Rainier Beach neighborhood. The nursery was started in 1935 and used to grow trees and shrubs for park landscaping for 74 years. The 7-acre site has several large greenhouse and shade house structures, as well as acres of open space, some of which may be protected as wetlands.



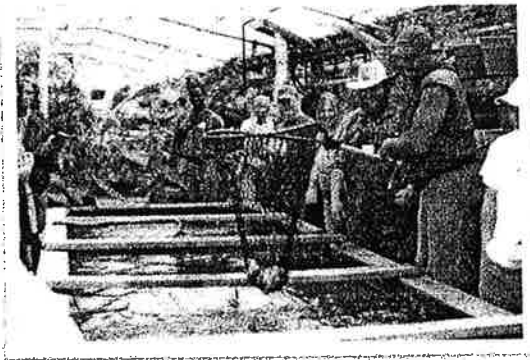
Greenhouses on the site

Opportunity: In June 2009, Seattle Parks began relocating the horticulture program at Atlantic City Nursery to another facility and the site will be fully closed in early 2010. Parks has begun a public process for determining the future use of the site. The existing greenhouses and possibly other open spaces on site could be easily repurposed for growing food. A similar site, the 4-acre

Mara Farm in the South Park area, produces 13,000 pounds of food for community consumption each year.

Need: The Rainier Valley has the highest concentration of low-income residents in the city of Seattle. Access to affordable fresh and healthy food, particularly vegetables and greens, is an ongoing challenge for residents. The site could provide community members and organizations with year-round gardening opportunities and be a place to offer training and education for youth, in addition to producing fresh food for local distribution.

Next Steps: Continue forming a broad-based local coalition, develop a preliminary site plan and budget, explore possible barriers and alternate requests for site use and participate in the public



The greenhouses at Growing Power are a year-round source of food for people in Milwaukee, Wisconsin.



An aerial view of the site, which has green-houses on the north end and acres of open space

process beginning Thursday December 3rd 7:00 pm

at the Pritchard Island Beach Bath House.

Supporters to Date: Healthy and Active Rainier Valley Coalition, Seattle Tilth, Rainier Valley Food Bank, Sustainable South Seattle

To Get Involved: Contact Harry Hoffman, Rainier Beach resident, harry_hoffman@msn.com (206) 276-1472

Dec. 3rd