

EDI fund workshops

Jan 18 at the Ethiopian
Community of Seattle 8323
Rainier Ave S from 12pm to 2pm

Jan 22 at Yesler Community
Center 917 E Yesler Way from
4-6pm

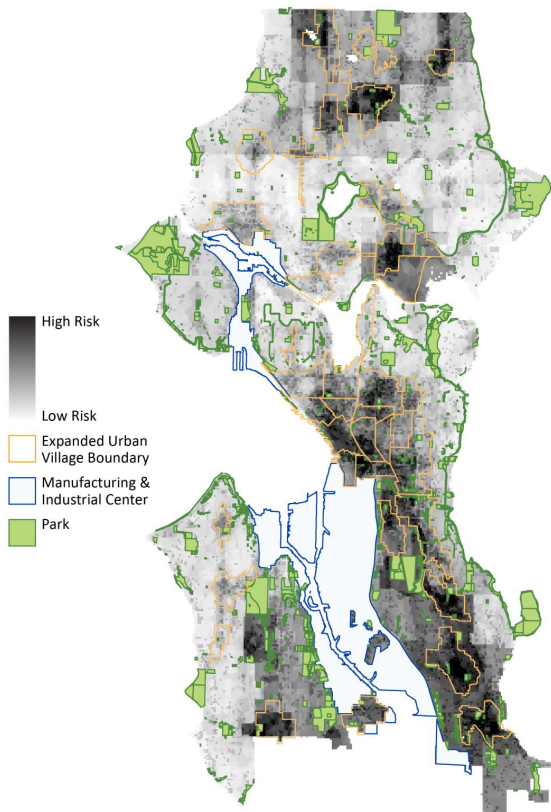
Jan 23 at South Park
Neighborhood Center 8201 10th
Ave S from 5-7pm

Jan 24 at the Lake City
Community Center 12531 28th
Ave NE from 3-5pm

EDI focuses on neighborhoods at high risk of displacement

This map shows displacement
risk and access to opportunity.
The EDI focuses strategies,
programs, policies, and resources
to best meet the needs of our
communities who are at high risk
of displacement.

Displacement Risk Index



Applicant Eligibility

The EDI fund is intended to support anti-displacement strategies and promote economic development opportunities by supporting community-initiated solutions that are designed and implemented by communities that are subject to displacement as the region grows. As such, the EDI fund will prioritize applicants who are best able to demonstrate a thorough organizational commitment to equitable development as both practice and outcome in the relationship between their organization and the community whose interests they seek to represent.



Seattle
Office of Planning &
Community Development

Seattle's Equitable Development Initiative

Our vision for an equitable city

Seattle will become a city with people of diverse cultures, races, and incomes. All people will thrive and achieve their full potential regardless of race or means. Seattle's neighborhoods will be diverse and will include the community anchors, supports, goods, and services people need to lead healthy lives and flourish.

GOAL 1: Strong Communities and People.



Advance economic mobility and opportunity



Prevent residential, commercial, and cultural displacement



Build on local cultural assets

GOAL 2: Great Places with Equitable Access.



Promote transportation mobility and connectivity



Develop healthy and safe neighborhoods



Provide equitable access to all neighborhoods

What is the EDI funding?

The current funding round is making available \$5.5 million available for up to seven qualifying organizations.

Approximately \$1 million will be awarded to support capacity-building efforts over a two-year period, with \$4.5 million available to projects for pre-development and capital expenses.

For more information contact

Michael Blumson
EDI fund manager
michael.blumson@seattle.gov
206-684-5345